

## GALAPAGOS – SANTA CRUZ ISLAND WITH BAY TOUR Daily



### **PROGRAM INCLUDES:**

- - Round-trip airfare Quito – Baltra – Quito (includes only a backpack)
- - Airport assistance and transfers in Galápagos
- - Navigable tours in shared service
- - Land tours and transfers in semi-private service according to itinerary
- - Accommodation in selected hotel – Double or Twin room
- - Meals as detailed, based on fixed menu at hotel or local restaurants
- - Daily breakfast at hotels
- - Lunches and dinners at local restaurants (fixed menu served)
- - Hotel taxes included

### ITINERARY

**DAY 01: Baltra – Santa Cruz: Highlands & Lava Tunnels**  
**DAY 02: Navigable Bay Tour & Las Grietas (snorkeling)**  
**DAY 03: Tortuga Bay Beach – Charles Darwin Research Station visit DAY 04:**  
**Twin Craters – Baltra**

### PRICE PER PERSON

<i>HOTEL</i>	DOUBLE ROOM
<b>GPS NATIVE 3*</b>	<b>1027</b>
<b>DEJAVU - PELICAN BAY 4*</b>	<b>1056</b>
<b>NINFA 4* superior</b>	<b>1164</b>

Rates are subject to change and availability without prior notice until the booking is confirmed and full payment is received.



**NOT INCLUDED:**

- Galápagos National Park Entrance Fee: USD 200 for foreigners, USD 30 for nationals, and USD 100 for Andean Community citizens (children 50%)
- Baltra Airport – Itabaca Channel Bus: USD 10 per person
- Tourist Transit Control Card: USD 20 (for both nationals and foreigners)
- Isabela Pier Entrance Fee: USD 10 for foreigners, USD 5 for nationals (children 50%)
- Single Room Accommodation (rate available upon request)
- Premium Meal Supplement: USD 75 per person
- Credit card payment fee

**GALÁPAGOS ITINERARY – 4 DAYS / 3 NIGHTS**

**DAY 1: BALTRA – SANTA CRUZ – HIGHLANDS**

Flight to the Galápagos Islands. Arrival at Baltra Island and transfer to Puerto Ayora. Lunch included. In the afternoon, visit the **Santa Cruz Highlands**, including Rancho El Chato 2, where you will observe Galápagos giant tortoises in their natural habitat. Dinner and overnight stay.

**DAY 2: BAY TOUR**

After breakfast, departure for the Bay Tour. Visit **La Lobería**, where you will enjoy a unique experience swimming and snorkeling with sea lions, sea turtles, and reef fish. Continue to **Punta Estrada** and the **Shark Channel**, where you can observe harmless white-tip reef sharks (tintoreras). Next, visit the **Love Channel**, followed by a return to Santa Cruz. Walk past salt mines to reach **Las Grietas**, where you can swim and snorkel among fish in crystal-clear waters. Lunch in Puerto Ayora. Return to the hotel. Free afternoon. Dinner and overnight stay.

**DAY 3: TORTUGA BAY – CHARLES DARWIN RESEARCH STATION**

Breakfast. Guided interpretive walk to the beautiful **Tortuga Bay Beach**, where you may observe marine iguanas and giant cacti along the way. Return to the hotel and lunch. In the afternoon, visit the **Charles Darwin Research Station**, where you will see land iguanas, the giant tortoise breeding center, and learn about the conservation of the islands. You will also have the opportunity to observe and photograph Galápagos tortoises in captivity. Return to the hotel. Dinner and overnight stay.

**DAY 4: TWIN CRATERS – BALTRA**

Breakfast and transfer to the airport, with a stop at the **Twin Craters**. Continue to Baltra Airport for your return flight.

**End of services.**



## OPTIONAL TOURS (DAY 3 – REPLACING THE BAY TOUR):

- **Full Day Santa Fe Island:** USD 129
- **Full Day Pinzón Island:** USD 141
- **Full Day Isabela Island + Tintoreras:** USD 165
- **Full Day Bartolomé / Plazas or Seymour Islands:** USD 270

### DESCRIPTION EACH ONE

#### FULL DAY SANTA FE ISLAND

Breakfast. Departure at 08:00 AM to Santa Fe Island (approx. 45-minute navigation).

Enjoy a panga ride observing seabirds such as blue-footed boobies, gulls, and terns, as well as cliffs and rock formations.

Snorkeling at two different sites, where you can swim with friendly sea lions, colorful fish, and abundant marine life.

Experience **artisanal experiential fishing**, a demonstration of traditional fishing practices with a tourist focus.

Lunch on board.

Visit a hidden beach where you can walk, observe marine iguanas in their natural habitat, relax, swim, and enjoy the surroundings.

Return to Santa Cruz.

---

#### FULL DAY ISABELA ISLAND

Breakfast and departure to Isabela Island (approx. 2.5-hour navigation).

This is the largest island in the Galápagos archipelago, formed by the fusion of six volcanoes. Wildlife includes penguins, flightless cormorants, marine iguanas, blue-footed boobies, pelicans, and red crabs.

Visit:

- **Wall of Tears** (historic site built by prisoners)
- **Flamingo Lagoon** (birdwatching)

Lunch included.

In the afternoon, bay tour to **Tintoreras**, **Lobería Chica**, and surrounding areas to observe sea lions, penguins, sharks, marine iguanas, and seabirds. Snorkeling included.

Return to Santa Cruz.



## FULL DAY FLOREANA ISLAND

Breakfast. Departure at 08:00 AM from Puerto Ayora.

Arrival at Floreana Island and disembark at Puerto Velasco Ibarra to observe marine iguanas.

Transfer by bus to the highlands to visit the **giant tortoise reserves (Galapagueras)**.

Visit **The Caves**, former shelters of the island's first inhabitants, and learn about their history and water sources.

Return to town for lunch at a local restaurant.

Visit **Playa Negra** for snorkeling, where you may observe sea lions, fish, sea turtles, reef sharks, and manta rays.

Return.

---

## FULL DAY PINZÓN ISLAND

Breakfast. Departure at 08:00 AM (1-hour navigation).

Snorkeling with sea lions, sea turtles, and colorful fish. During certain seasons, there is a chance to swim with Galápagos penguins.

Box lunch included.

Visit **Playa La Fe**, where you can observe marine iguanas, finches, and Galápagos hawks. Dolphin sightings may occur depending on the season.

Continue to a nearby islet for a panga ride and trolling (sport fishing demonstration). Return to the hotel.

---

## FULL DAY BARTOLOMÉ ISLAND

Early departure (06:00 AM). Transfer to Itabaca Channel and navigation to Bartolomé Island (approx. 1h45). Breakfast on board.

Admire the iconic **Pinnacle Rock**, a unique volcanic formation.

Climb to the summit for panoramic views resembling a lunar landscape.

Return to the beach for snorkeling with fish, sea turtles, starfish, sea urchins, and sea lions. Lunch on board and return to port. Transfer to hotel.





SuMundo  
C U M B A Y Á

DUAL / TRAVEL AGENCY CUMBAYATRAVEL S.A.S.

## FULL DAY NORTH SEYMOUR & BACHAS BEACH

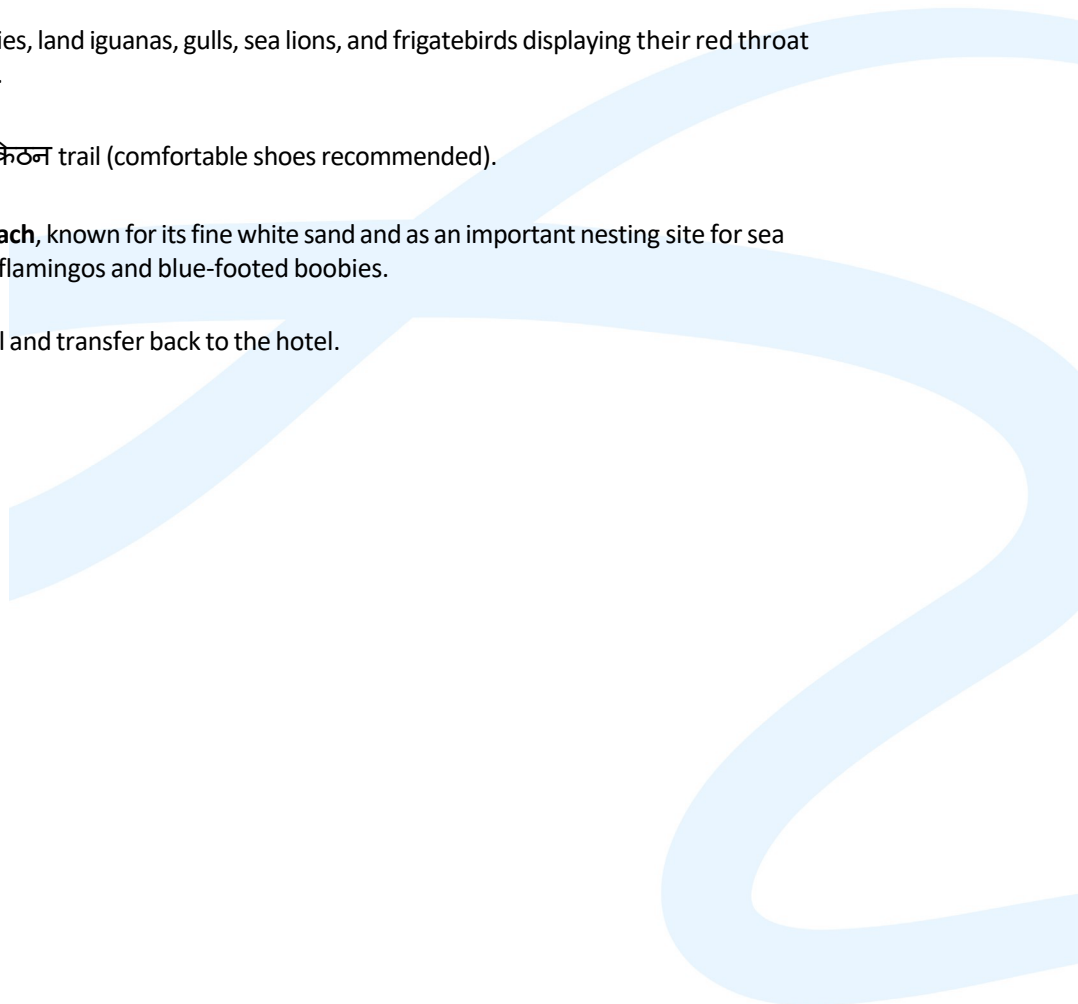
Early morning departure by bus to the north of the island, followed by a boat ride to **North Seymour Island**, a **UNESCO** wildlife sanctuary.

Observe blue-footed boobies, land iguanas, gulls, sea lions, and frigatebirds displaying their red throat pouches during courtship.


Walk along a moderately **difficult** trail (comfortable shoes recommended).

Continue to **Las Bachas Beach**, known for its fine white sand and as an important nesting site for sea turtles. You may also spot flamingos and blue-footed boobies.

Return via Itabaca Channel and transfer back to the hotel.



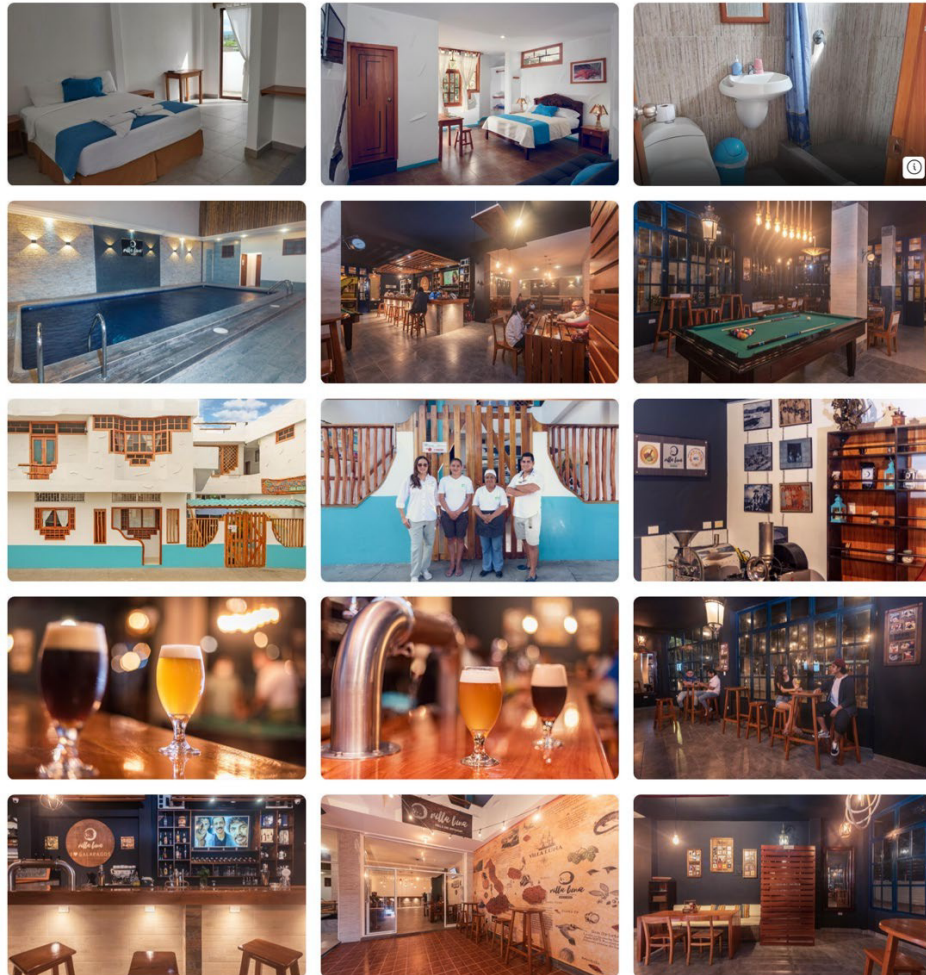
## Galapagos Native

This property is located just 50 meters from the beach in the Galápagos Islands, offering an  location for quick and easy access to nearby tourist attractions.

Galapagos Native features laundry services and complimentary internet access. Rooms are equipped with a minibar, flat-screen cable TV, and a private bathroom with shower and toilet.

Galapagos Native is an eco-friendly establishment, built with recyclable materials and using biodegradable cleaning products. Bars and restaurants are just a 2-minute walk away, while the picturesque Santa Cruz waterfront is located 400 meters from the property.

The hotel harnesses natural wind and sunlight to generate energy and incorporates water and electricity recycling systems. The Charles Darwin Research Station is a 5-minute walk away, and Seymour Airport is approximately 45 minutes by bus.



## Hotel Deja Vu

Deja Vu Galápagos offers a serene and comfortable retreat, ideally located in the residential neighborhood of “El Edén” in Puerto Ayora, on Santa Cruz Island. The property is just a 10-minute walk from the Fausto Llerena Giant Tortoise Breeding Center and the Charles Darwin Research Station, and only 100 meters from the ocean.

The hotel features 10 well-appointed rooms, including single, double, and triple accommodations. Each room is fully equipped with a private bathroom, hot water, cable TV, air conditioning, and private closets, ensuring a pleasant and relaxing stay while you enjoy the unique beauty of the Galápagos Islands.

The warm and personalized service provided by the owners is known for its friendliness and attention to detail, making guests feel truly at home.



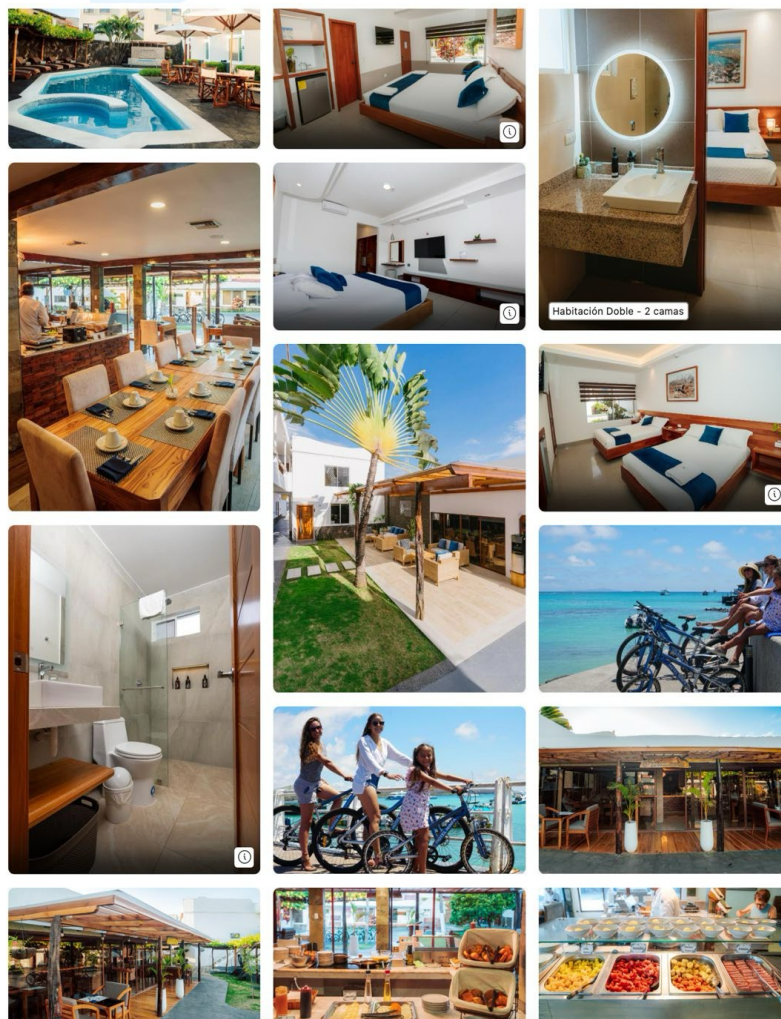
## HOTEL NINFA

Hotel Ninfa, located in Puerto Ayora, offers family rooms equipped with air conditioning, private bathrooms, and complimentary Wi-Fi. Each room features a minibar, TV, and desk, ensuring a comfortable and pleasant stay.

**Exceptional Services:** Guests can enjoy a year-round outdoor swimming pool, terrace, and garden. Additional amenities include a jacuzzi, solarium, and game room. Complimentary bicycles are available for exploring the surrounding area.

**Dining Experience:** The traditional on-site restaurant serves local cuisine, offering a buffet breakfast that includes hot dishes, pancakes, cheese, and fresh fruit. A bar provides a relaxing atmosphere for evening drinks.

**Prime Location:** Situated 46 km from Seymour Airport, Hotel Ninfa is within walking distance of Playa de los Alemanes and close to Tortuga Bay. The area also offers excellent opportunities for diving and other outdoor activities.





SuMundo  
CUMBAYÁ

DUAL / TRAVEL AGENCY CUMBAYATRAVEL S.A.S.

